

ZONING MAP

Jefferson County West Virginia

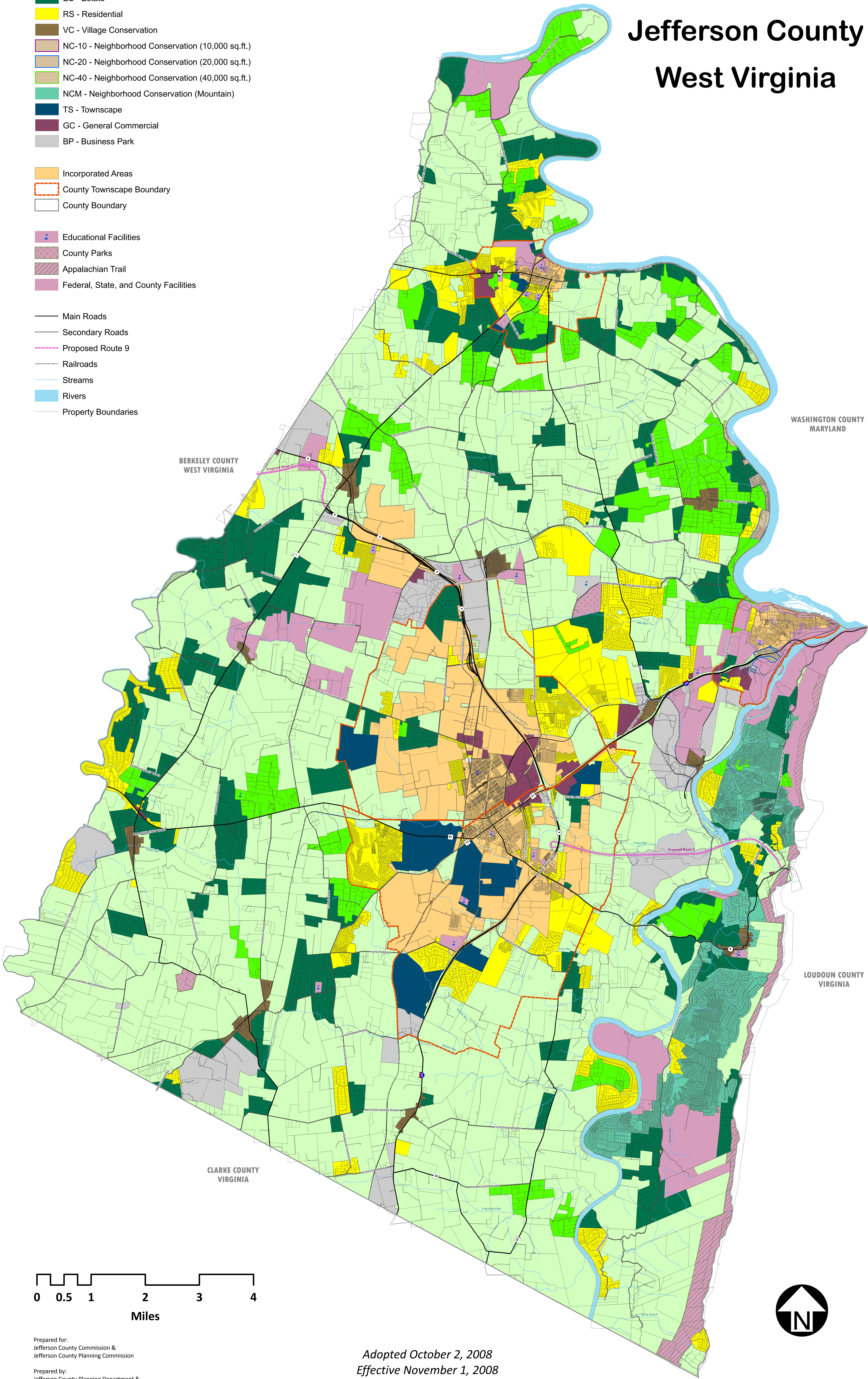
Zoning Districts

- AG - Agriculture
- CS - Countryside
- ES - Estate
- RS - Residential
- VC - Village Conservation
- NC-10 - Neighborhood Conservation (10,000 sq.ft.)
- NC-20 - Neighborhood Conservation (20,000 sq.ft.)
- NC-40 - Neighborhood Conservation (40,000 sq.ft.)
- NCM - Neighborhood Conservation (Mountain)
- TS - Townscape
- GC - General Commercial
- BP - Business Park

- Incorporated Areas
- County Townscape Boundary
- County Boundary

- Educational Facilities
- County Parks
- Appalachian Trail
- Federal, State, and County Facilities

- Main Roads
- Secondary Roads
- Proposed Route 9
- Railroads
- Streams
- Rivers
- Property Boundaries



0 0.5 1 2 3 4
Miles

Prepared for:
Jefferson County Commission &
Jefferson County Planning Commission

Prepared by:
Jefferson County Planning Department &
Jefferson County Geographic Information System

Adopted October 2, 2008
Effective November 1, 2008